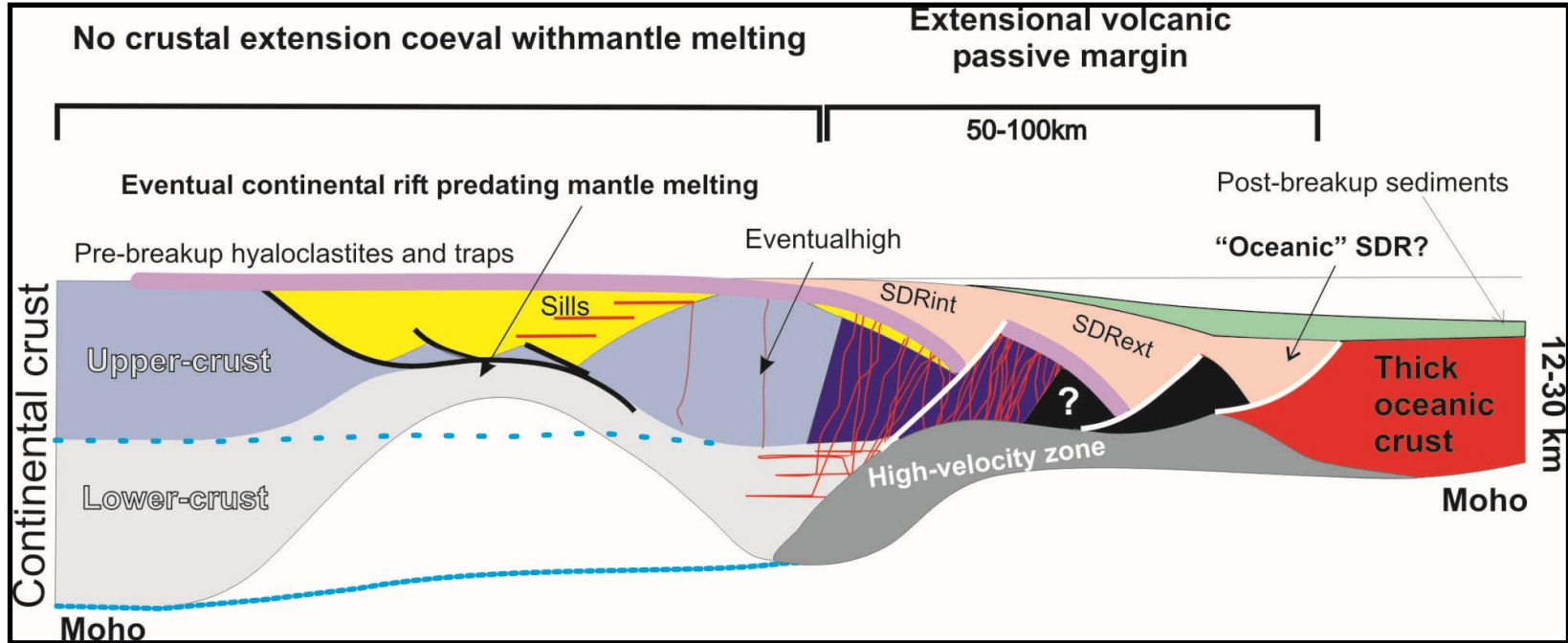
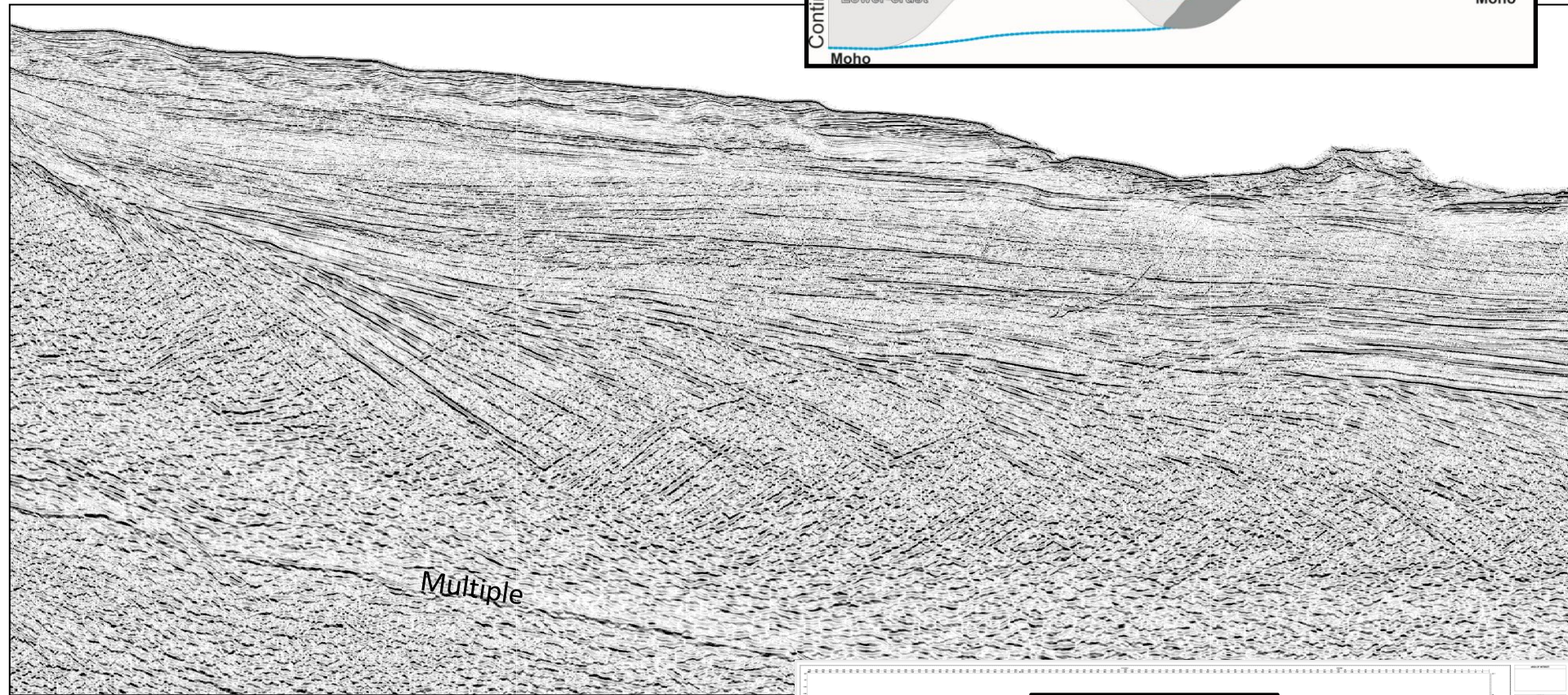
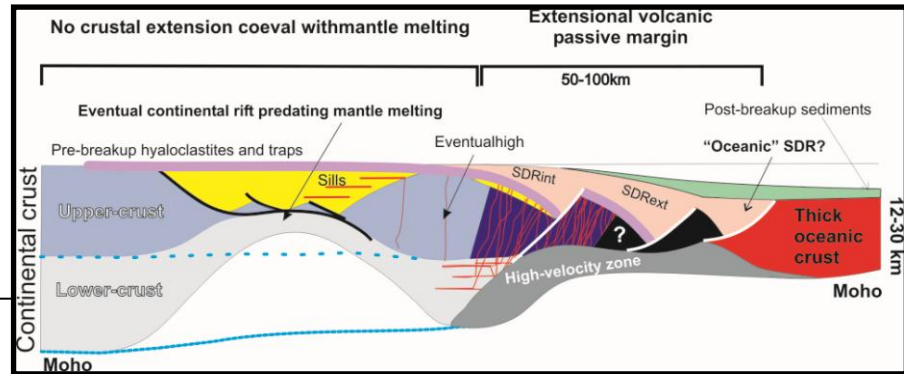


Objectifs des missions scientifiques au Groenland : comprendre la structure et l'évolution des transitions océan-continent quand le manteau terrestre fond anormalement



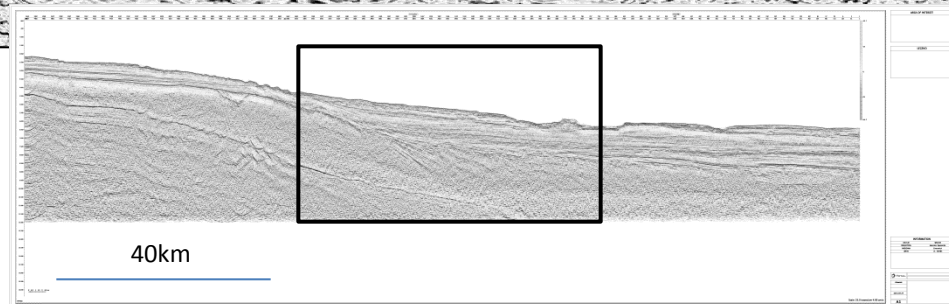
Les marges passives volcaniques

Des structures normalement observables en offshore profond et par des méthodes géophysiques lourdes...

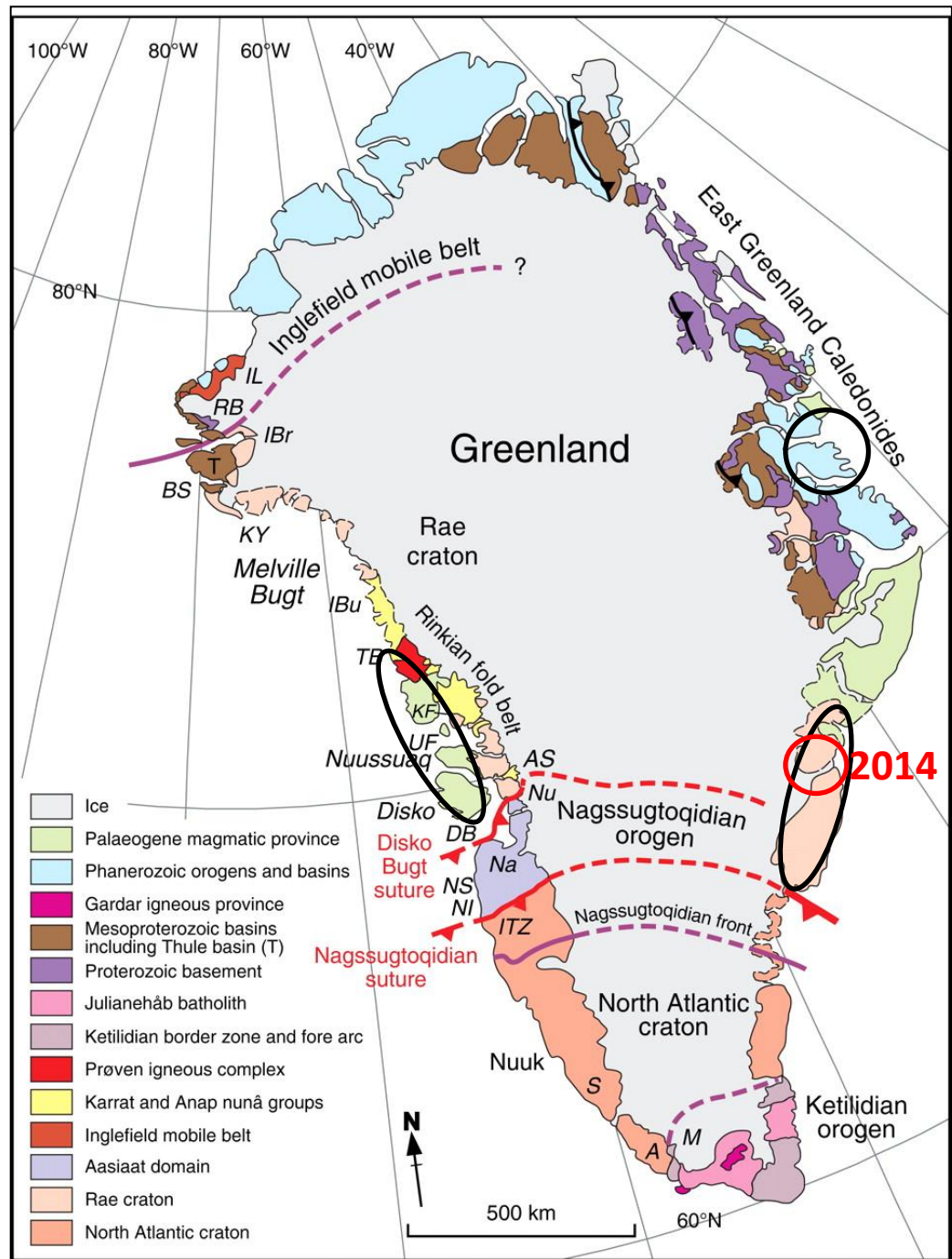


Courtesy of BGR (Argentine, S-Atlantic)

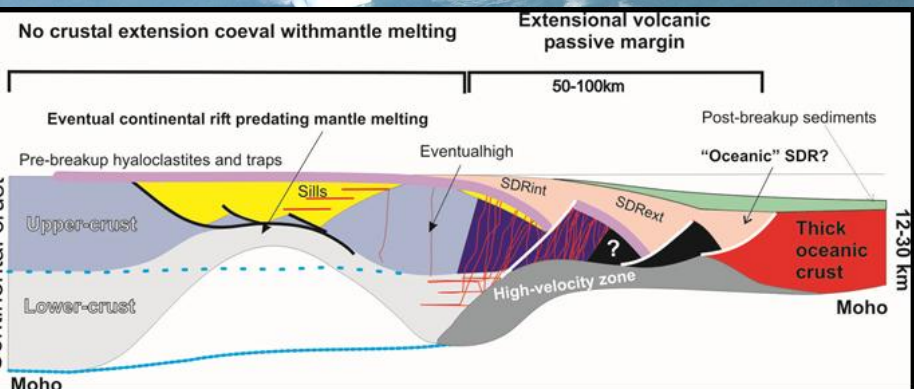
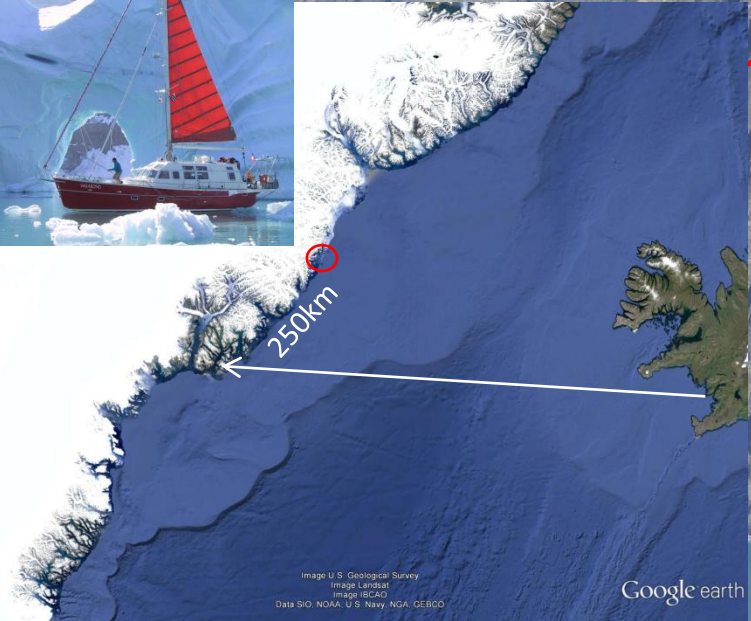
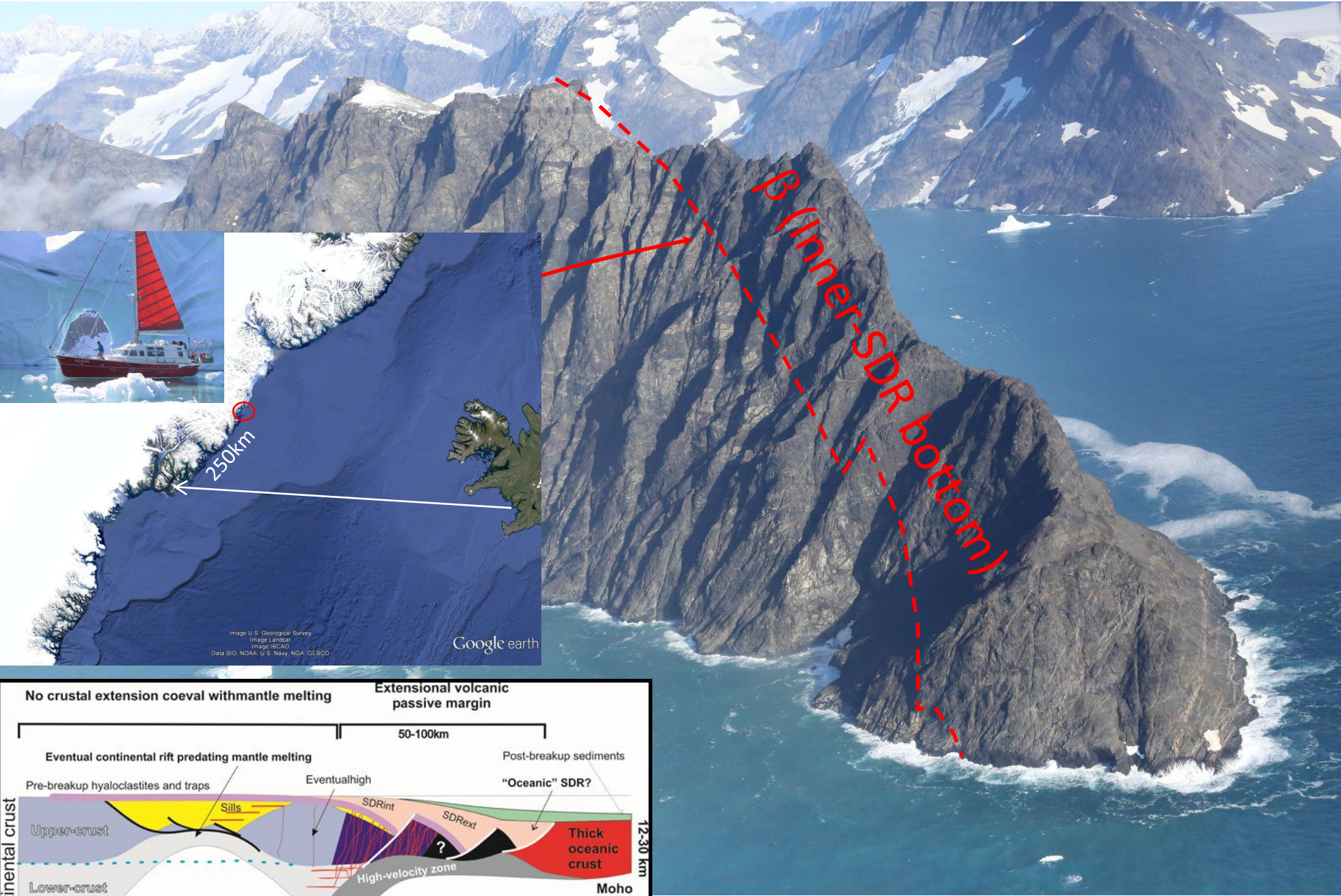
12s TWT



Au Groenland, ces structures après érosion peuvent être observées et étudiées directement



GRI 2014 East-Greenland





1

2

3

4



